

**PARCEL MAP 8743**

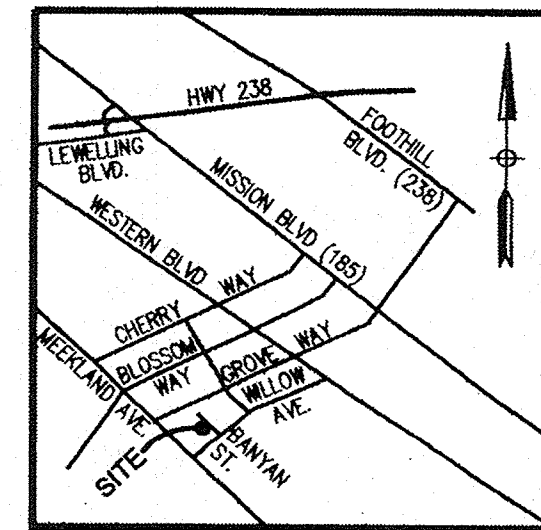
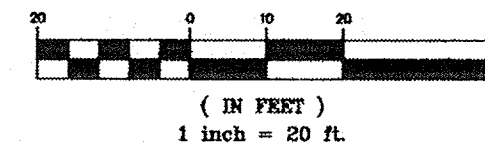
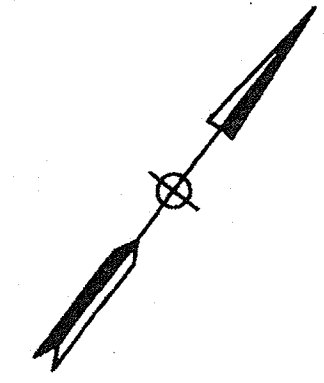
BEING LOT 105 AND THE A PORTION OF LOT 104 OF THE RE-SUBDIVISION OF BLOCK C, MEEK ESTATE ORCHARDS, FILED APRIL 24, 1922, IN BOOK 7 OF MAPS, PAGE 97, ALAMEDA COUNTY RECORDS.

EDEN TOWNSHIP, ALAMEDA COUNTY, CALIFORNIA

AL PASCUAL & ASSOCIATES, INC.

ENGINEERS SURVEYORS PLANNERS  
PLEASANTON, ALAMEDA COUNTY, CALIFORNIA

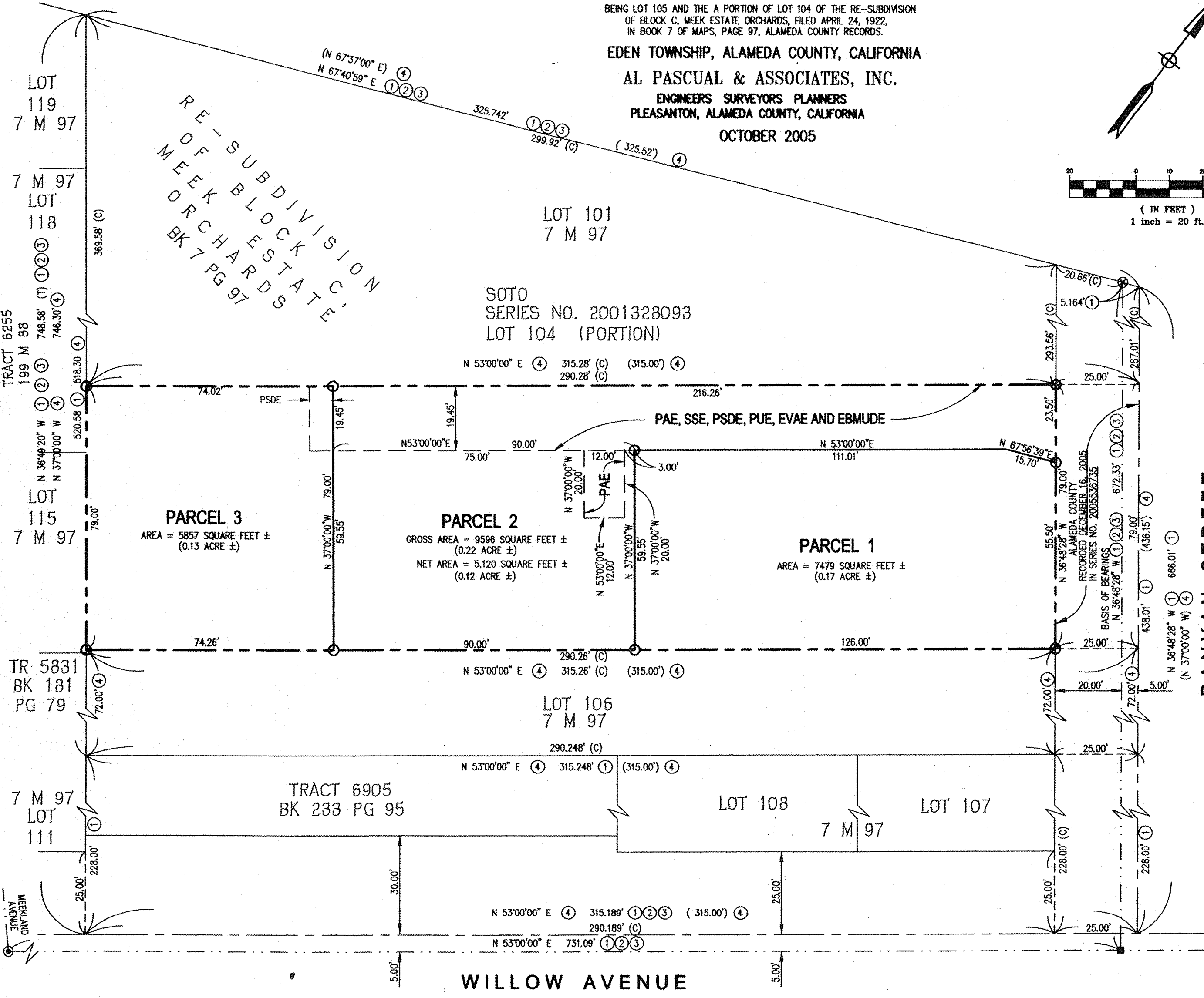
OCTOBER 2005



**VICINITY MAP**  
NTS

RE-SUBDIVISION  
OF BLOCK "C"  
MEEK ESTATE  
ORCHARDS  
BK 7 PG 97

SOTO  
SERIES NO. 2001328093  
LOT 104 (PORTION)



**BASIS OF BEARINGS**

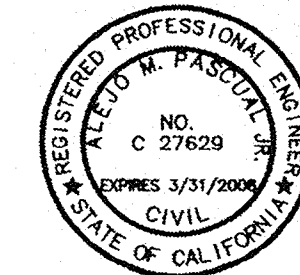
THE BEARING OF THE MONUMENT LINE OF BANYAN STREET AS SHOWN ON "TRACT 6905, EDEN TOWNSHIP, ALAMEDA COUNTY, CALIFORNIA", RECORDED IN BOOK 233, PAGE 95, ALAMEDA COUNTY RECORDS. TAKEN AS NORTH 36° 48' 28" WEST.

**LEGEND**

---	EXTERIOR BOUNDARY
---	PARCEL LINE
---	CENTER LINE
---	MONUMENT LINE
---	EASEMENT LINE
---	TIE LINE
●	FOUND ALAMEDA COUNTY IRON BOLT PER ① ②
○	SET 1/2" REBAR WITH PLASTIC CAP WITH RCE 27629
⊗	RAILROAD SPIKE PER ① ③
⊙	FOUND STANDARD ALAMEDA COUNTY CONCRETE MONUMENT PER ① ② ③
C	CALCULATED
T	TOTAL
PAE	PRIVATE ACCESS EASEMENT
PUE	PUBLIC UTILITY EASEMENT
PSDE	PRIVATE STORM DRAIN EASEMENT
SSE	SANITARY SEWER EASEMENT
EVAE	EMERGENCY VEHICLE ACCESS EASEMENT
EBMUDE	EAST BAY MUNICIPAL UTILITIES DISTRICT EASEMENT
( )	RECORD DIMENSION

**REFERENCES**

- ① TRACT 6905 (BK 233 MAPS PAGE 95)
- ② TRACT 5831 (BK 181 MAPS PAGE 79)
- ③ TRACT 6255 (BK 199 MAPS PAGE 88)
- ④ RE-SUBDIVISION OF BLOCK "C" MEEK ESTATE ORCHARDS (BK 7 OF MAPS PAGE 97)



PARCEL MAP 8743

Map 8743

pg 93